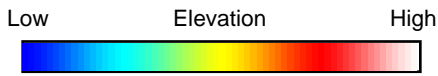
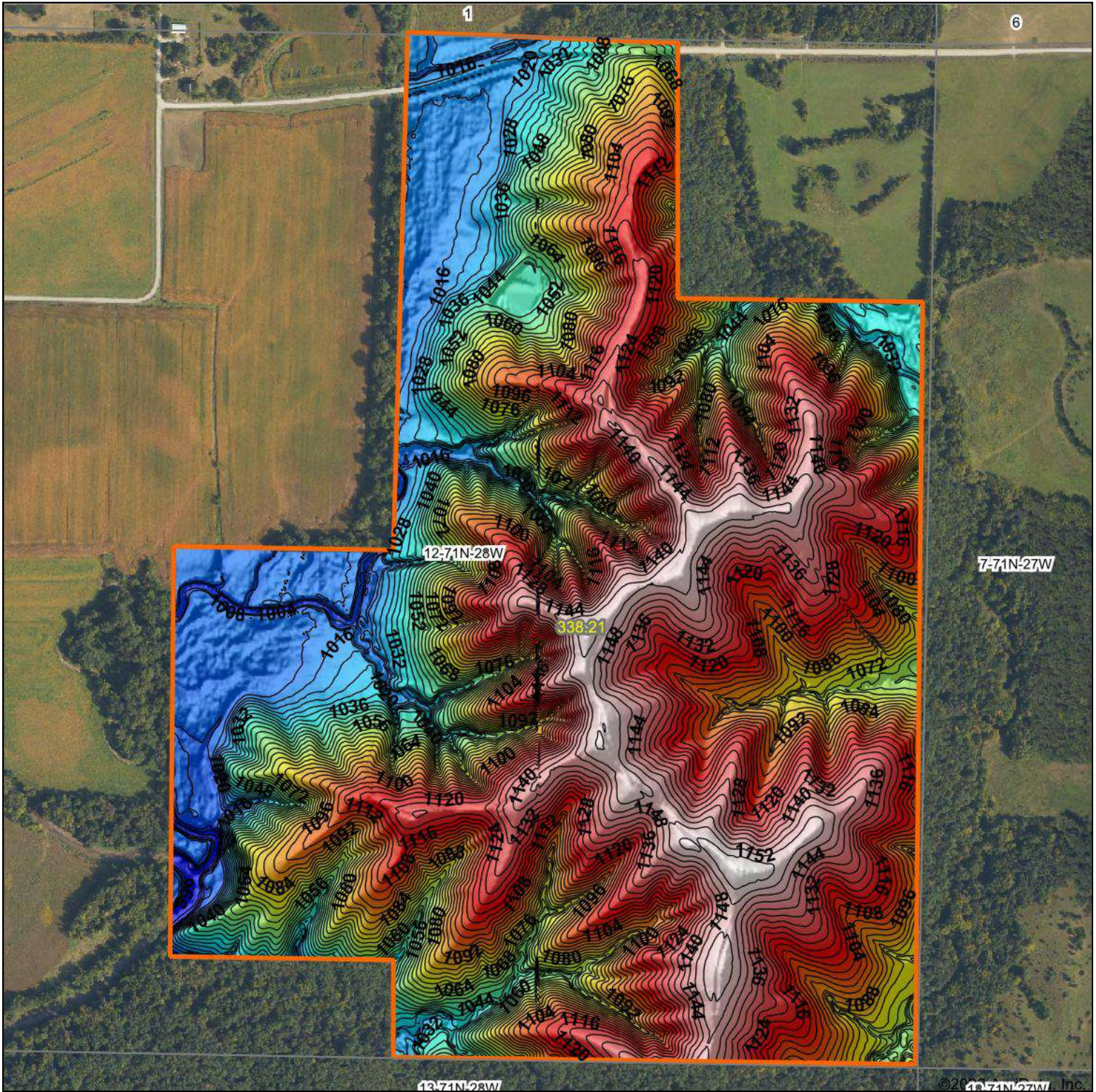


# Topography Hillshade



Source: USGS 3 meter dem

Interval(ft): 4

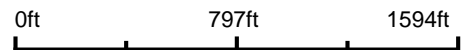
Min: 995.8

Max: 1,158.6

Range: 162.8

Average: 1,086.1

Standard Deviation: 43.37 ft



2/14/2026

**12-71N-28W**  
**Union County**  
**Iowa**

Boundary Center: 40° 57' 43.71, -94° 1' 18.5



Maps Provided By



© AgriData, Inc. 2025

www.AgriDataInc.com